



**KINDLY  
MOTOR**

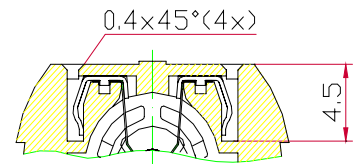
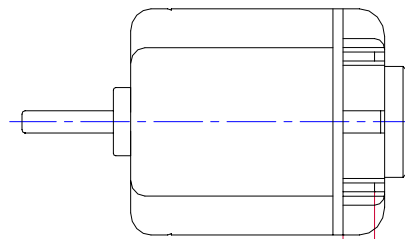
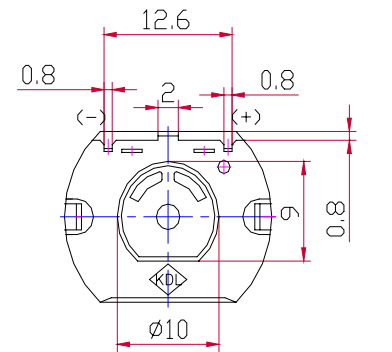
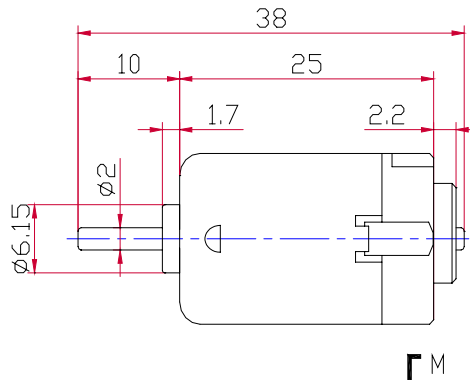
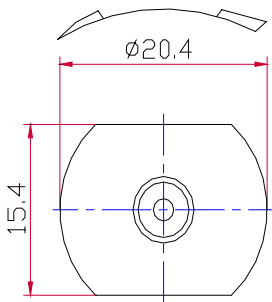
PMDC Carbon Brush Motor

**KFP130 Series**

Bearings Sleeve  
 Number of poles 3  
 EMC Suppression Internal Disk Varistor (optional)  
 Standard Shaft (L) 35, 38, 42, 45



DIRECTION OF ROTATION



UNIT: MILLIMETERS

3.0 REF SLOT LENGTH

Model	Voltage		No Load		At Maximum Efficiency					Stall	
	Operating Voltage	Nominal (Constant)	Speed rpm	Current A.	Speed rpm	Current A.	Torque g-cm	Output W	Eff. %	Torque g-cm	Current A.
KFP130S-12240	7.5-14.5	12	13000	0.075	10258	0.281	16.45	1.73	51.4	78	1.05
KFP130S-09400	7.5-14.5	13.0	8400	0.050	6425	0.163	15.1	0.990	46.9	64	0.53
KFP130S-07750	9.0-28.0	24.0	8750	0.030	6746	0.101	17.2	1.190	49.0	75	0.34
KFP130-08520	7.5-14.5	13.5	9150	0.040	6760	0.133	9.4	0.652	42.7	36	0.32
General Test Tolerance			±15%								

**Typical Application:** Automotive Rearview Mirrors, Head Light Level Adjusters, Tank Openers and More...